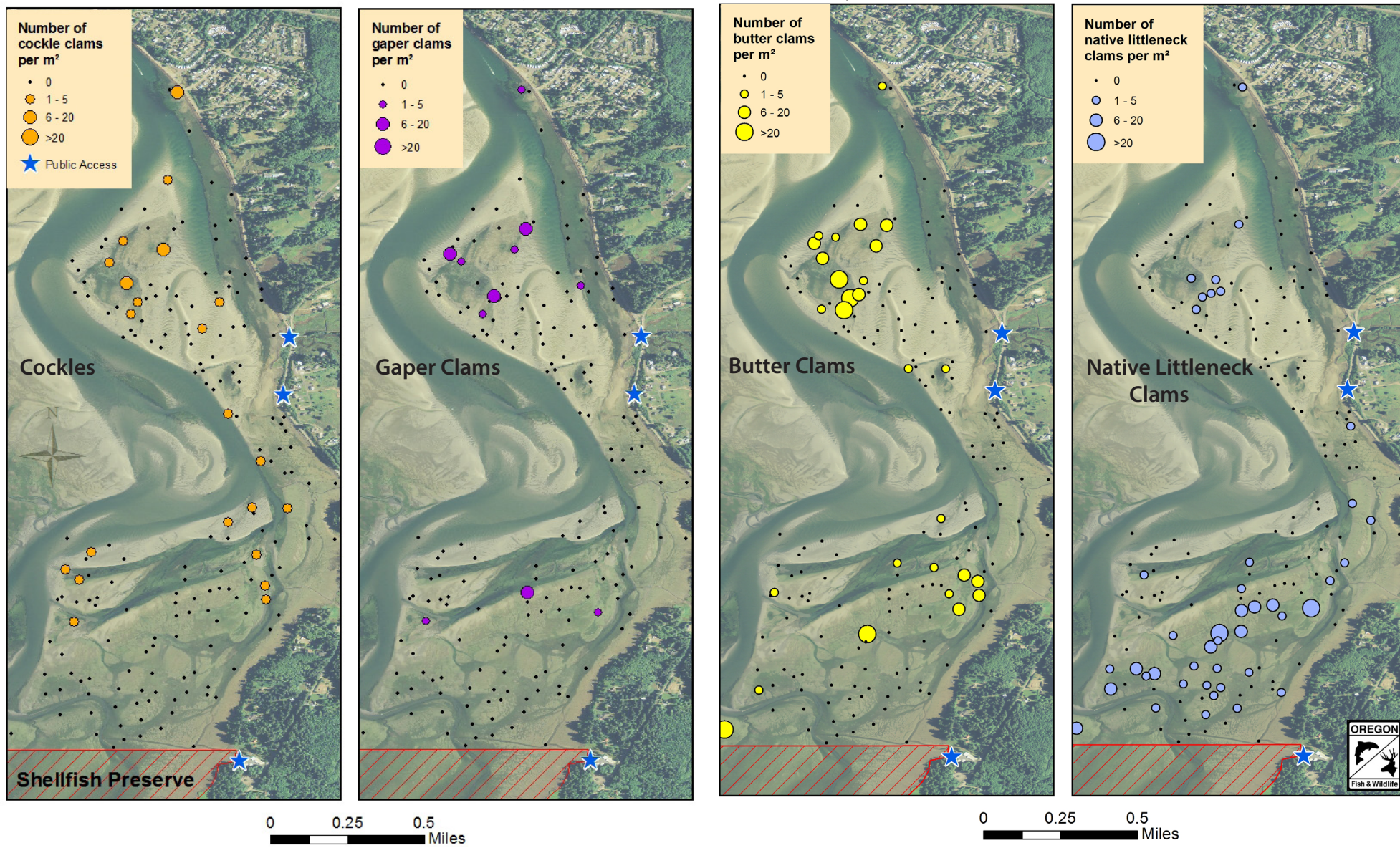


# Bay Clam Densities in Netarts Bay, 2013-2014

## Eastside (Yager Creek and Whiskey Creek Flats)

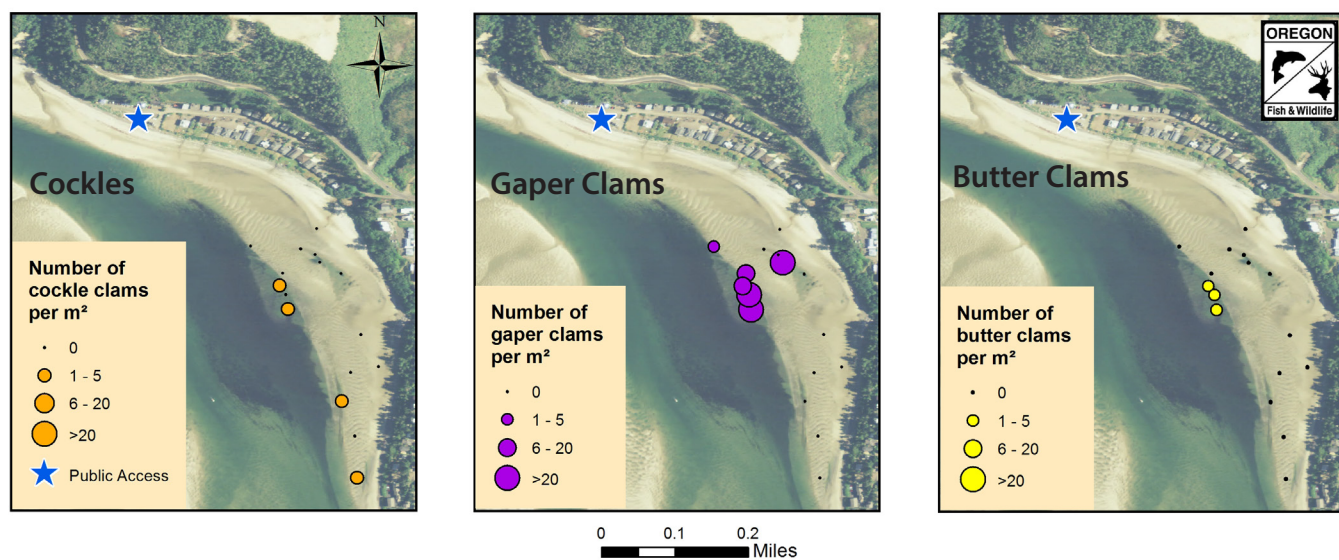


★ The blue stars indicate easy walk-on access points. Shellfish Preserves are areas closed to clam harvest.

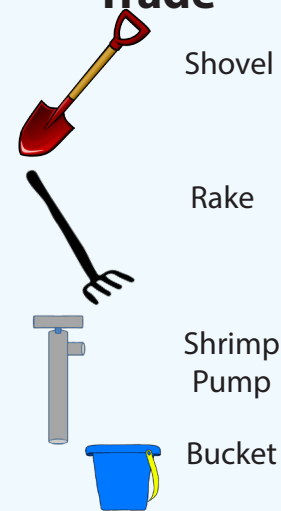
Additional clamming maps and directions to access points can be found at: [www.dfw.state.or.us/MRP/shellfish/SEACOR](http://www.dfw.state.or.us/MRP/shellfish/SEACOR)

### Happy Camp


Additional access point just south of map near the boat ramp.



### Tools of the Trade




### Bay Clams




**Cockles**  
(*Clinocardium nuttallii*)

- Found in sand or sandy mud sediments
- Located near the surface
- Live throughout the intertidal
- Size 1.5 - 3 inches
- Harvest with a rake; avoid eelgrass beds
- Tip: often found laying on the surface




Cockle "show"



**Gaper Clams**  
(*Tresus capax*)


- Found in sandy sediments
- Located 1 to 3.3 feet deep
- Live in low intertidal
- Size 3-6 inches
- Harvest with a shovel or shrimp pump; avoid eelgrass beds
- Tip: gaper shows can look like burrowing shrimp holes. Stick your finger in the hole and if you feel the neck retract, you have found a gaper. Dig beside the show to avoid damaging the clam.




Gaper "show"

**Butter Clams**  
(*Saxidomus gigantea*)

- Found in sandy mud sediments
- Located 0.5 to 1.2 feet deep
- Live in the high intertidal
- Size 2 - 4 inches
- Harvest with a shovel or rake
- Tip: dig carefully; the clam might not be directly below show

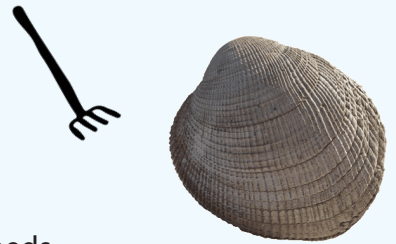




Butter "show"

**Native Littleneck Clams**  
(*Leukoma staminea*)

- Found in sandy mud sediments
- Located surface to 0.8 feet deep
- Live in the high intertidal
- Size 1.5 - 2.5 inches
- Harvest with a rake; avoid eelgrass beds
- Tip: most common and readily accessible by foot on the flat near the Whiskey Creek Fish Hatchery

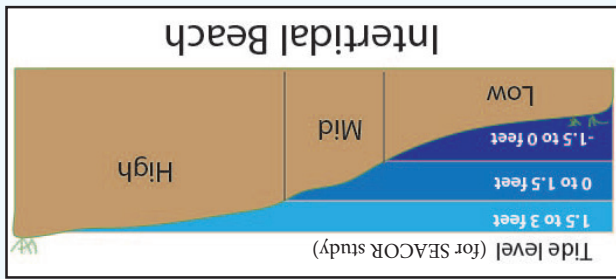




Clammers on Yager Creek Flat

1. Refill your holes: a pile of sand can harm clams you may want to dig another day.
2. Avoid digging in the eelgrass: eelgrass is an essential home for many animals living in the estuary. Once eelgrass is dug up, it no longer provides that necessary shelter. Dig in gaps between eelgrass patches.

## What is Good Clamming Etiquette?



Find tide tables at:  
[www.tidesandcurrents.noaa.gov](http://www.tidesandcurrents.noaa.gov)

Bay clams are often harvested in the intertidal - the part of the beach between high tide and low tide. Many clams live in the low intertidal, only accessible during a minus tide.

## When Should I Dig?

### What is SEACOR?

The Shellfish and Estuarine Habitat Assessment of Coastal Oregon (SEACOR) is part of ODFW's Shellfish program. SEACOR staff conduct counts of bay clams in Oregon estuaries. The primary goals include:

- Document** where recreationally important bay clams are found
- Count** the abundance and biomass of each species
- Describe** the type of habitats where each species is found

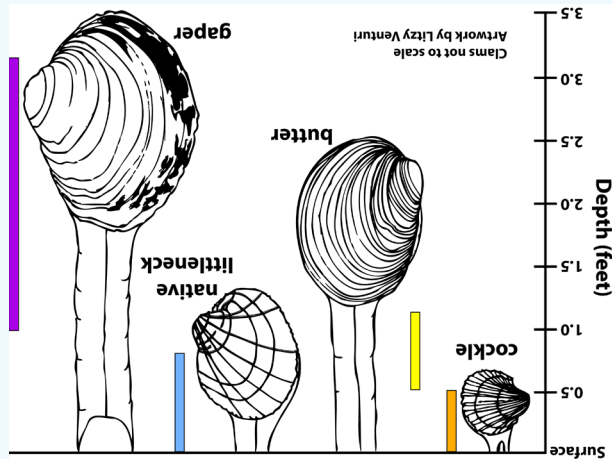
This research targets recreationally harvested bay clams: cockles, butters, gapers, and native littlenecks.

Information obtained by SEACOR informs resource managers and provides a baseline for monitoring future changes in Oregon estuaries.



A SEACOR biologist sorting and identifying clams on Netarts Bay

\*Front cover photo- Netarts Bay, ShoreZone Imaging Project, Oregon, 2011



- Cockles (orange bar): surface to 0.5 feet
  - Butter clams (yellow bar): 0.5 to 1.2 feet
  - Native littleneck clams (blue bar): surface to 0.8 feet
  - Gaper clams (purple bar): 1 to 3.3 feet
- Different bay clam species live at different depths in the sediment.

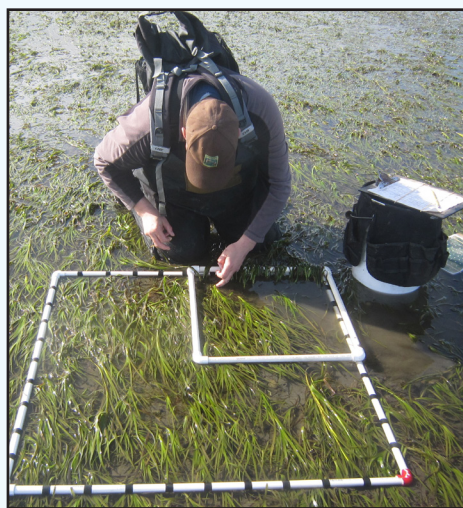
## How Deep Should I Dig?



For more on shellfish regulations visit:  
[www.dfw.state.or.us/MRP/shellfish/regulations](http://www.dfw.state.or.us/MRP/shellfish/regulations)

The daily catch limit is 20 bay clams (cockle, butter, native littleneck and gaper clams) per person, of which only 12 may be gaper clams.

## How Many Clams Can I Harvest?



A SEACOR biologist recording habitat data in Netarts Bay

## For More Information

### Website

[www.dfw.state.or.us/MRP/shellfish/SEACOR](http://www.dfw.state.or.us/MRP/shellfish/SEACOR)

### Email

[ODFW.SEACOR@state.or.us](mailto:ODFW.SEACOR@state.or.us)

### Shellfish Regulations

[www.dfw.state.or.us/MRP/shellfish/regulations](http://www.dfw.state.or.us/MRP/shellfish/regulations)

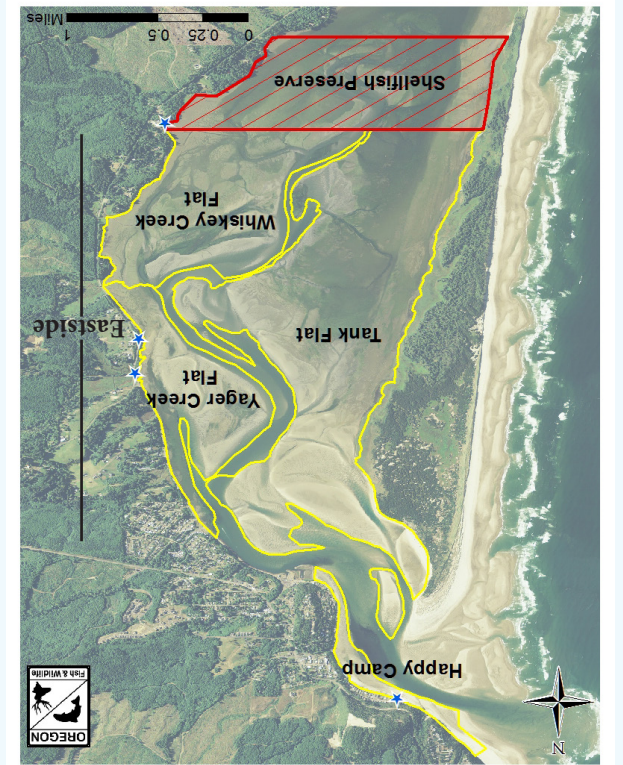
### Shellfish Harvest Hotline

1-800-448-2474

Recreational shellfish license fees provided funding for this study. Clam diggers and crabbers contribute directly to research on resources they use.



Oregon Dept. of Fish and Wildlife  
 Marine Resources Program  
 2040 SE Marine Science Dr.  
 Newport, OR 97365  
 541-867-4741



Netarts Bay Clamming Flats

Unlike most of Oregon's estuaries, Netarts Bay is not fed by a major river. Instead, a number of small streams flow into it from the surrounding watershed. This results in relatively high salinity in the bay, enhancing shellfish habitat quality.

Netarts Bay provides excellent habitat for many shellfish species and is a popular location for recreational clamming and crabbing. Commercial harvest of cockles and oyster farming also occur within the bay. These various uses make it important for ODFW to map and quantify estuarine habitat and resources.

## Netarts Bay

# Where to Harvest Bay Clams

